

See shade in a new light

animeo IB+ TouchBuco™

The intuitive control interface
*for small and medium-sized
buildings*



•••
*So that everyone
can freely control
the role of natural light
in their living and
working environment.*

4	animeo IB+ TOUCHBUCO™	16	SOMFY AT YOUR SIDE
6	THE ADVANTAGES FOR	18	CATALOGUE
6	Occupants	18	TouchBuco™ & accessories
8	Building managers	22	Sensors & accessories
10	Installers	30	Motor Controllers & accessories
12	SYSTEM ARCHITECTURE	36	Setting tools
14	ENERGY BENEFITS	38	User controls

Whatever the latitude or season, **controlling light and heat while preserving natural resources is an essential human need.** This is the same at home, at work, at school, at the hospital and wherever buildings accommodate human activities.



That is why we create the means to control the solar protection of buildings, ensuring the well-being of those who live there paying constant attention to energy performance.



We support the needs of facilitated management of buildings **by providing connected solutions, accessible on-site or remotely.**



We allow everyone to determine their own thermal and visual comfort: a simple movement is enough to control natural light, modulate heat and ensure privacy.



By creating solutions in the service of the users, **we contribute to improving efficiency at work as well as the quality of care and learning, thereby contributing to better health.**



In association with those who design, build and manage buildings, and together with our solar protection partners, **we provide open and scalable solutions that meet all energy performance and comfort needs.**

animeo IB+ TouchBuco™

Conceived to control the solar protection systems in small and medium-sized buildings, animeo IB+ TouchBuco™ is the automation solution which can be configured for each zone, quickly and easily.

With animeo IB+ TouchBuco™, you create dedicated scenarios for 1 to 8 zones.

Results: optimal visual and thermal comfort for the occupant and optimisation of energy performance in the building.

Which communication technologies?




Wired technology: to control all blinds (interior, exterior) fitted with wired Somfy motors.



Somfy Radio Technology: The addition of radio expansion modules (RTS cards) makes it possible to control blinds with remote controls or RTS radio wall-mounted controls. Wireless technology is ideal for renovations and allows you to position or move control points without having wiring issues.


Remote management
and preventive maintenance

Enrich
with functions
and advanced services


Somfy's remote and real-time
support and troubleshooting service


Motor Controllers

Automate
your façades with
animeo IB+ TouchBuco™


Wired or radio
user controls


Weather Stations
M8 & M13

Motorize
all solar shading


animeo IB+ TouchBuco™



The solar shading control solution
for small and medium-sized buildings



The advantages for occupants



ENJOY automatic control of blinds to work better

Thanks to the automatic control of blinds, **animeo IB+ TouchBuco™** frees the occupants from managing the brightness in their space, by offering them a better quality of life and the ability to concentrate better at work.

“ No more need to worry about manual blinds! With automatic control, the light is always optimally managed, which has significantly improved our conditions for learning and teaching.



TAKE BACK CONTROL to suit the occupant's needs

The occupant can take back control at any time, **animeo IB+ TouchBuco™** offers a wide range of remote controls or wall-mounted control points.

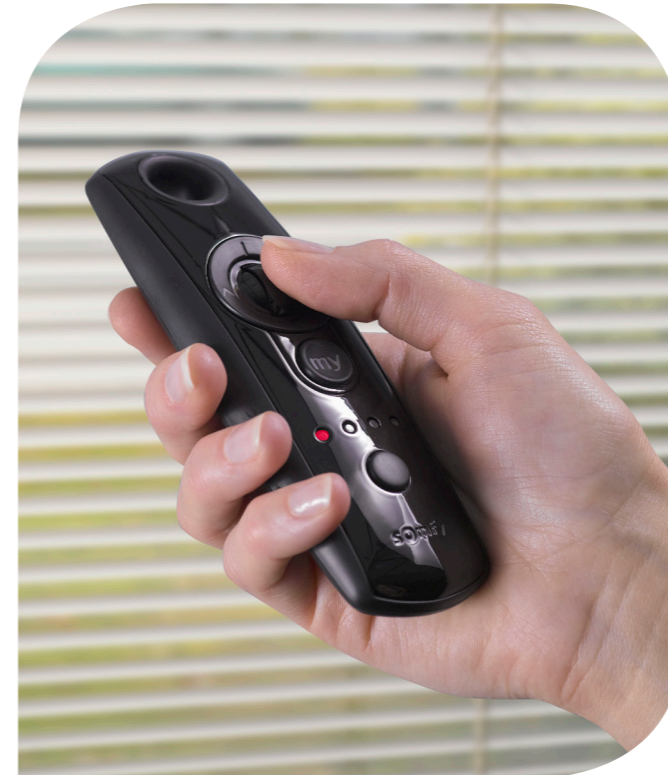
“ THE advantage: the option to save a favourite position for blinds (My position) and activate it with a specific button.

The advantages for building managers

EFFECTIVELY SUPERVISE AND CONTROL the installations

The intuitive **animeo IB+ TouchBuco™** touch screen interface enables to monitor and control the status of installations, define the different levels of access and make adjustments to the building zones with just a few clicks.

“ I manage several buildings. I need a simple and secure monitoring tool, which remains restricted to users whose access rights I have personally defined.



RECONFIGURE products easily

Easily pair again RTS user controls and motor zones, without having to access the motor or the installation's wiring.

“ I want to be able to reorganise the user controls for occupants, without having to contact a professional to change the wiring.

GET A REMOTE DIAGNOSTIC REPORT and pro-active assistance

The Somfy teams diagnose the status and running history of products and identify the nature of the fault, in order to better prepare an intervention.

“ If there is an incident, my installer or the dedicated Somfy teams can now assist me remotely, to provide support which is faster and more efficient.



The advantages for installers



INSTALL in assisted mode

Thanks to its integrated setup wizard, the interface will guide you step by step at each stage of the installation. From the allocation of blinds in each zone to the commissioning, **animeo IB+ TouchBuco™** assists you so that you can work in peace.

“ I want to be able to devote myself to my clients, and not to deciphering a complex interface. With **animeo IB+ TouchBuco™** to guide me through the installation, it's fast and fluid.

DON'T MISS any deals

With its 4 control modes including energy, comfort & security features, and a wide range of accessories such as sensors or timers, **animeo IB+ TouchBuco™** meets all the needs of both the research department and investor.

“ No two projects are alike. A solution that adapts to the weather is good. And the business too, which is even better!



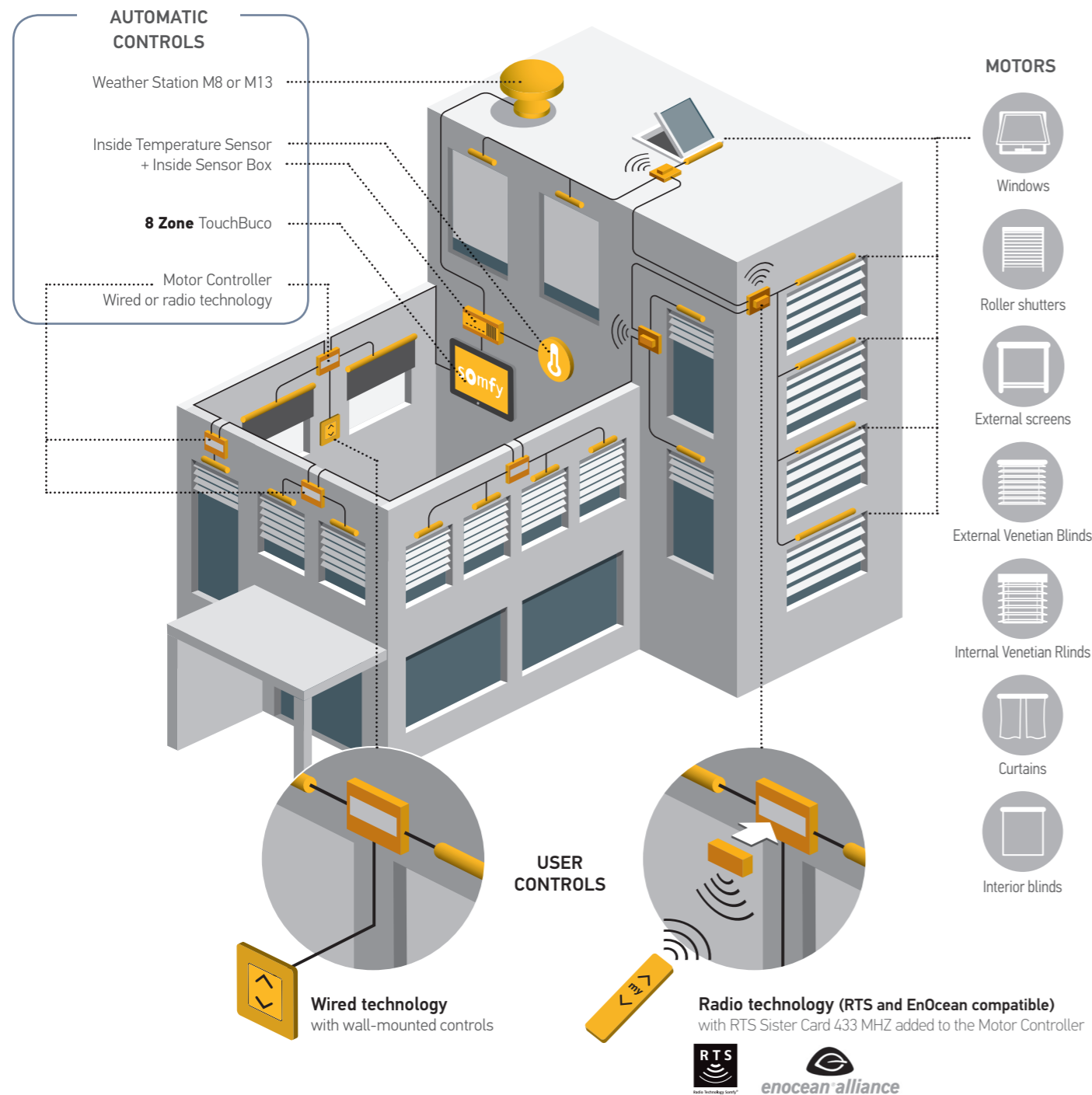
OFFER a remote diagnostic service

Change settings, activation of controls, firmware updates, etc. The remote management of **animeo IB+ TouchBuco™** allows performing various maintenance or troubleshooting operations in order to minimize activity on site.

“ Without remote maintenance, I would spend my time having to go out on site. Now I can concentrate on troubleshooting that requires my presence.

System architecture

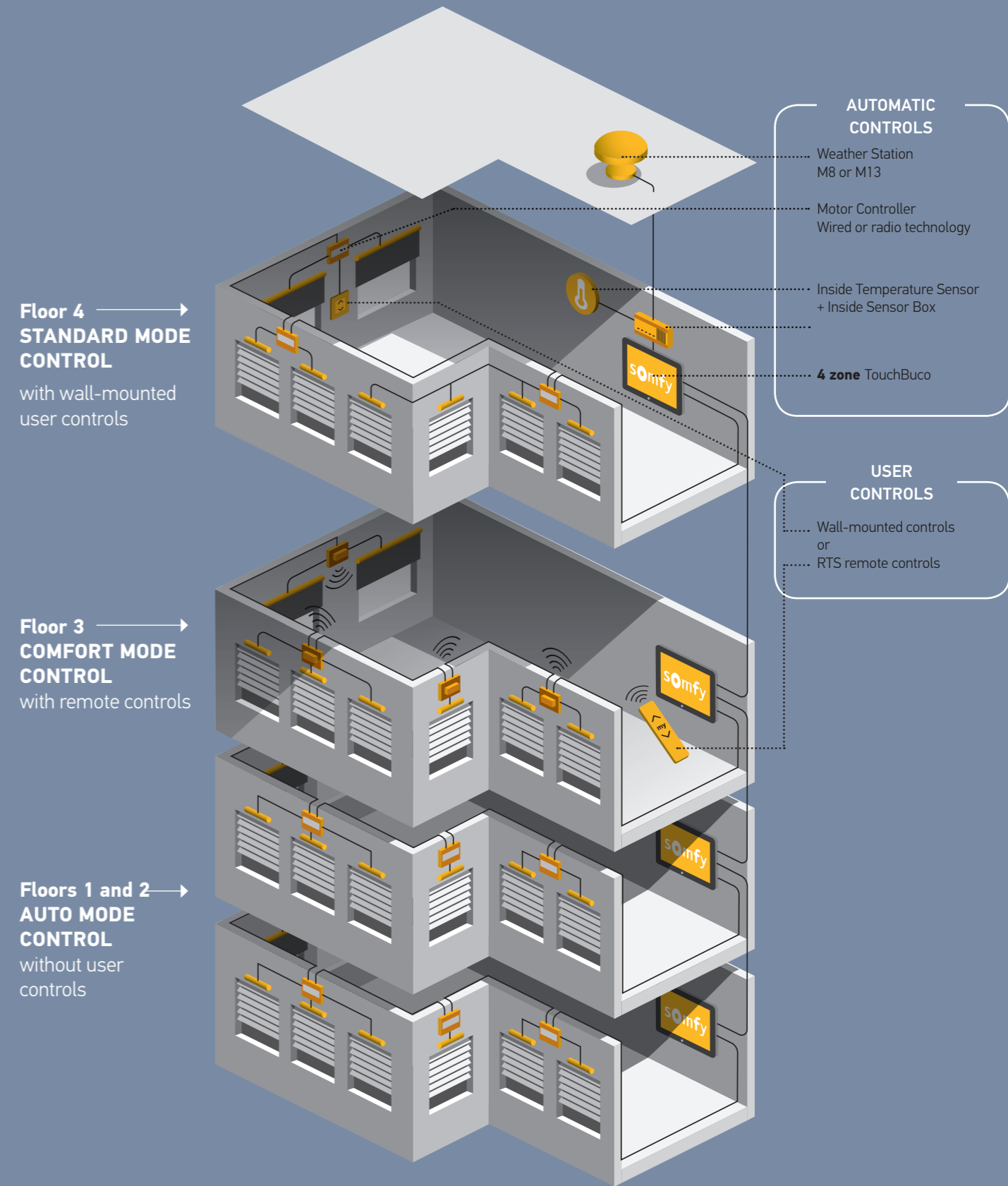
A solution adapted to the uses of buildings



1

MANAGEMENT OF A SINGLE-OWNER BUILDING

1 x 8 zone TouchBucu for a whole building, to control up to 8 different zones



2

MANAGEMENT OF A MULTI-OWNER BUILDING

1 x 4 zone TouchBucu per floor, to independently control each co-owned lot

Satisfy the occupants while **reducing** the energy bill

Good management of natural light restricts the use of artificial light, heating and air conditioning. In addition to the comfort of the occupant, animeo IB+ TouchBuco™ provides a comprehensive and lasting solution to the challenges of saving energy.

GOOD TO KNOW

Buildings are responsible for approximately 40 % of the energy consumption in the European Union. An automated blind management solution can reduce a bill for heating and air conditioning by up to 70 % while improving well-being and productivity.



4 control methods to meet all expectations

and to make it possible to switch from fully automatic to complete autonomy for the occupant.

From fully automated...

... to the autonomy for the occupant.



Priority of features per mode

	AUTO MODE	STANDARD MODE	MANUAL MODE	COMFORT MODE
	<i>100 % automated system to maximise energy savings</i>	<i>A good balance between energy savings and the comfort of the occupant</i>	<i>Priority to the needs of the occupant, while retaining energy features</i>	<i>To give full autonomy to occupants</i>
SAFETY FEATURES	Priority 1	Priority 1	Priority 1	Priority 1
ENERGY FEATURES	Priority 2	Priority 2	Priority 2	Not active
SUN FEATURES	Priority 3	Priority 3	Priority 3	Priority 2
LOCAL CONTROL	Not active	Active <i>Without priority</i>	Active <i>Override the sun and energy features until reset to automatic</i>	Active <i>Override the sun features until reset to automatic</i>



Option to select several modes depending on the presence or absence of the occupants in the building.

Somfy
at your side

Your partner at each stage of the project



Planning



- > Consulting
- > Production of 3D models and plans
- > Assistance during project meetings

The Somfy technical teams are at your service to assist you during the meetings before the project begins, in the presence of other consultants and experts, to meet the specific needs of each project.



Installation



- > Help with the installation
- > System integration
- > Commissioning

During the installation stage, we are available to provide you with different types of materials and services to suit your needs.



Maintenance



- > Maintenance contracts
- > On-site troubleshooting
- > System optimisation

In order to extend the life of the system installed and ensure optimal performance, complete maintenance is necessary. We adapt our services to your needs.

Enjoy
the technical
expertise and
know-how
of Somfy's
teams

Whatever the needs and the complexity of the project, we are able to offer an optimal automated solar protection solution for your building, whether it is new or being renovated. If you have any questions about managing your solar protection systems, please contact us. In terms of our building management products, we have designed a whole series of services to help you, including post-installation maintenance contracts. We also offer a consultancy service (drawings, wiring plans, planning) during the initial stages of the project, when the installation takes place or for the maintenance of the system.

We seek tirelessly, through our products and our services and by our presence at your side, to improve the living and working environment, in particular in offices, schools, health establishments and homes.

Product Pages



TOUCHBUCO & ACCESSORIES
p. 20 > 22



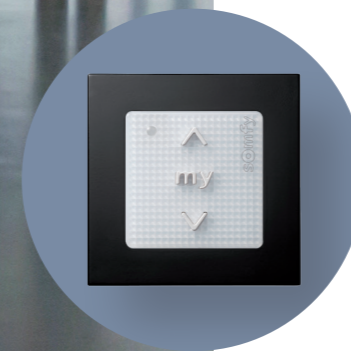
SENSORS & ACCESSORIES
p. 24 > 31



MOTOR CONTROLLERS
& ACCESSORIES
p. 32 > 36



SETTING TOOLS
p. 38 > 39



USER CONTROLS
p. 40 > 43



TOUCHBUCO & ACCESSORIES

- 21 4 Zone TouchBuco
- 21 8 Zone TouchBuco
- 21 4 Zone TouchBuco BACnet
- 21 8 Zone TouchBuco BACnet
- 22 Sensor BUS Adapter for TouchBuco
- 22 Surface Mounting Box TouchBuco
- 22 Flush Mounting Box TouchBuco

TOUCHBUCO & ACCESSORIES

■ 4 Zone TouchBuco

Ref. 1860254

Central unit designed for solar shading and window automation to control up to 4 individual façade orientations of a building. Capacitive seven inch user touch screen providing a wide range of useful functions optimizing the building performance.

Dimensions	200 x 132 x 72 mm
Power supply	100-230 V AC
Mounting	Wall or flush-mounted



■ 8 Zone TouchBuco

Ref. 1860255

Central unit designed for solar shading and window automation to control up to 8 individual façade orientations of a building. Capacitive seven inch user touch screen providing a wide range of useful functions optimizing the building performance.

Dimensions	200 x 132 x 72 mm
Power supply	100-230 V AC
Mounting	Wall or flush-mounted



■ 4 Zone TouchBuco BACnet

Ref. 1870474 (CE, EAC, KC); Ref. 1860308 (UL)

4 Zone TouchBuco incorporating the connection to a Building Management System.

Dimensions	200 x 132 x 72 mm
Power supply	100-230 V AC
Mounting	Wall or flush-mounted



BACnet™*

■ 8 Zone TouchBuco BACnet

Ref. 1870475 (CE, EAC, KC); Ref. 1860309 (UL)

8 Zone TouchBuco incorporating the connection to a Building Management System.

Dimensions	200 x 132 x 72 mm
Power supply	100-230 V AC
Mounting	Wall or flush-mounted



BACnet™*

* BACnet™ is a trademark of ASHRAE

■ Sensor Bus Adapter for TouchBuco
Ref. 9018147

An accessory to connect more than 5 TouchBuco on a single Outside Sensor Box. Necessary every 5th TouchBuco and/or every 500 m on the bus sensor. EU compliant only.



Dimensions	72 x 122 x 35 mm
Power supply	24 V
Mounting	DIN-Rail

■ Surface Mounting Box TouchBuco
Ref. 9019838

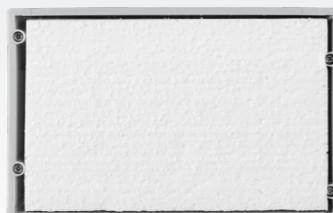
Allows to install the 4 or 8 Zone TouchBuco on a wall. Must be used with the Flush Mounting Box TouchBuco.



Dimensions	254 x 180 x 90 mm
Power supply	N/A
Mounting	Surface-mounted

■ Flush Mounting Box TouchBuco
Ref. 9019837

Allows to install the 4 or 8 Zone TouchBuco in a wall, or door of an electrical cabinet.



Dimensions	192 x 119 x 68 mm
Power supply	N/A
Mounting	Flush-mounted

■ TouchBuco Report Generator

A software tool for creating a complete report (pdf) containing all the settings made in a project.

Download available on



<https://somfy.sharepoint.com/:u:/r/sites/EDM1/bgbclibrary/Softwares%20%20Apps/PC%20tools/TouchBuco%20Report%20Generator/TouchBuco%20Report%20Generator-1.0.49-win64.zip?csf=1&web=1>



SENSORS & ACCESSORIES

- 25 Weather Station M8
- 25 Weather Station M13
- 25 Mast Adaptor for Weather Station
- 25 Kit Metallic Mast for Weather Station
- 26 Wall Mount Bracket
- 26 Bracket for Weather Station
- 26 Outside Temperature Sensor
- 26 Sun Sensor
- 27 Mounting Bracket for Sun Sensor
- 27 Sun Sensor + Mounting Bracket Kit
- 27 Ondeis 24V DC
- 27 Wind Speed Sensor
- 28 Heated Wind Sensor
- 28 Wind Direction Sensor
- 28 Outside Sensor Box
- 28 5A Power Supply DRM 100-240 V AC

- 29 Power Supply DRM 24 V DC 1.5A
- 29 Inside Temperature Sensor
- 29 Housing for Inside Temperature Sensor
- 29 Inside Sensor Box
- 30 BUS Lightning Protection
- 30 24 V Lightning Protection
- 30 Socket Lightning Protection
- 30 Lightning Protection 1A
- 31 Sensor Station
- 31 Sensor Station Extended

SENSORS & ACCESSORIES

Weather Station M8

Ref. 1860306

Weather station including 8 sensors (4 sun sensors, 1 wind speed, 1 rain and 1 temperature sensor and 1 date/time).

Dimensions	105 x 103 mm x Ø 25 mm
Power supply	24 V
Mounting	Wall or mast-mounted



Weather Station M13

Ref. 1860307

Weather station including 13 sensors (8 sun sensors, 1 wind speed, 1 wind direction, 1 rain, 1 temperature sensor and 1 date/time).

Dimensions	105 x 103 mm x Ø 25 mm
Power supply	24 V
Mounting	Wall or mast-mounted



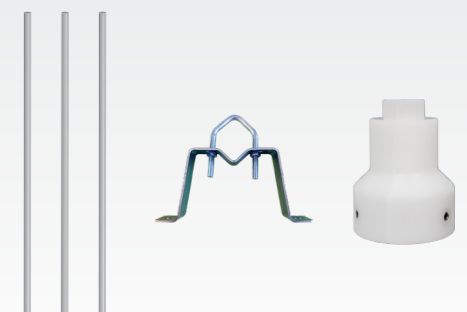
Kit Mast with 25 mm adaptor

Ref. 9027035

Kit including 3 metallic pieces of 1 meter each, a Wall Mount Bracket and a Mast Adaptor to fix the Weather Station M8 or M13 on a wall.

Dimensions Mast	3 x 1000 mm x Ø 50 mm
Power supply	N/A
Mounting	Wall-mounted

Dimensions Adaptor	H 90 mm x Ø 50 mm
Power supply	N/A
Mounting	On a mast

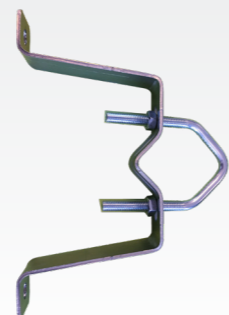


Wall Mount Bracket

Ref. 1860336

To fix the mast on the wall.

Dimensions	200 x 90 x 30 mm
Power supply	N/A
Mounting	Wall-mounted

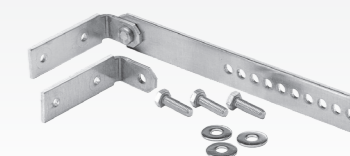


Mounting Bracket for Sun Sensor

Ref. 9127888

Makes it possible to install the Sun Sensor.

Dimensions	34 x 88 x 47 mm
Power supply	N/A
Mounting	N/A

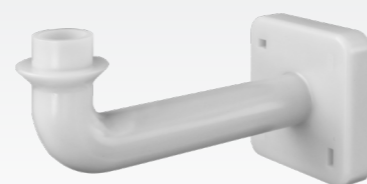


Bracket for Weather Station

Ref. 1860320

Accessory for façade mounting of the Weather Station M8 or M13.

Dimensions	180 x 80 x 80 mm
Power supply	N/A
Mounting	Wall-mounted

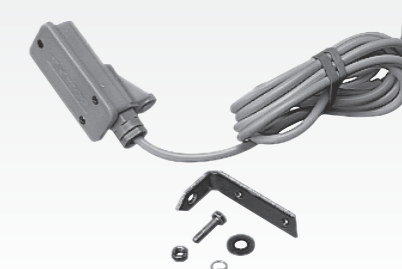


Sun Sensor + Mounting Bracket Kit

Ref. 9154043

Kit including a Sun Sensor and its Mounting Bracket.

Dimensions	34 x 88 x 47 mm
Power supply	N/A
Mounting	Dedicated mounting bracket included



Outside Temperature Sensor

Ref. 9001611

Measures the external temperature.
To be used with the Outside Sensor Box.

Dimensions	H 150 mm / Ø 115 mm
Power supply	N/A
Mounting	N/A

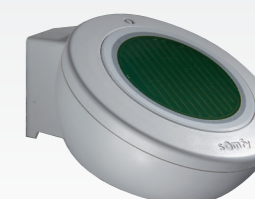


Ondeis 24 V DC

Ref. 9016344

Capacitive sensor to measure precipitation.
To be used in conjunction with the Outside Sensor Box.

Dimensions	115 x 100 x 85 mm
Power supply	24 V DC
Mounting	Wall-mounted



Sun Sensor

Ref. 9050100

Measures the intensity of the sun light in LUX.
To be used with the Outside Sensor Box.
Supplied without Mounting Brackets.

Dimensions	34 x 88 x 47 mm
Power supply	N/A
Mounting	Dedicated mounting bracket



Wind Speed Sensor

Ref. 9001608

Measures wind speed in connection with the Outside Sensor Box..

Dimensions	H 200 mm / Ø 240 mm
Power supply	N/A (dry contact)
Mounting	On a mast



■ Heated Wind Sensor

Ref. 9140180

Measures the wind speed in conjunction with the Outside Sensor Box. Integrated heating device to avoid freezing of the sensor. Requires an external 24 V power supply.



Dimensions	H 200 mm / Ø 240 mm
Power supply	24 V AC/DC
Mounting	On a mast

■ Wind Direction Sensor

Ref. 9013807

Measures the wind direction in connection with the Outside Sensor Box to take the exact geographical façade orientations into account.



Dimensions	303 x 515 x 48 mm
Power supply	N/A
Mounting	On a mast

■ Outside Sensor Box

Ref. 9001606/9001607 (extension)

Interface to connect the sensors to the TouchBuco. Requires a 24 V DC power supply.



Dimensions	207 x 255 x 90 mm
Power supply	24 V DC
Mounting	Wall-mounted

■ 5A Power Supply DRM 100-240 V AC

Ref. 1860093

Supplies the Outside Sensor Box and Motor Controller 4DC-4.5 A max output current with 24 V DC.



Dimensions	130 x 180 x 61 mm
Power supply	220 - 240 V AC
Mounting	DIN-rail

■ Power Supply DRM 24 V DC 1.5 A

Ref. 9017611

Allows to supply the Outside Sensor Box (without heated sensors). Only CE compliant.



Dimensions	78 x 93 x 56 mm
Power supply	100 - 240 V AC
Mounting	DIN-rail

■ Inside Temperature Sensor

Ref. 9008044

Measures the inside temperature to manage the building's energy. Delivered with a 1 metre cable.



Power supply	N/A
Mounting	In a dedicated housing

■ Housing for the Inside Temperature Sensor

Ref. 9008045

For surface mounting of the Inside Temperature Sensor

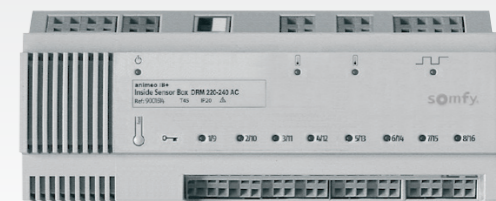


Dimensions	75 x 75 x 25 mm
Power supply	N/A
Mounting	Wall-mounted

■ Inside Sensor Box

Ref. 9001614 (230 V AC) / 9001615 (120 V AC)

Connects 8 zone controls, either key controls for locking or standard switches to control zones (up/down). Can connect 2 Inside Temperature Sensors.



Dimensions	210 x 90 x 61 mm
Power supply	220 V AC - 230 V AC / 120 V AC
Mounting	DIN-rail

■ BUS Lightning Protection

Ref. 9025706

Device to protect the animeo system inside the building against lightning via the RS485 sensor bus of the Outside Sensor Box.

Dimensions	51 x 45 x 12 mm
Power supply	N/A
Mounting	In Socket Lightning Protection



■ Sensor Station

Ref. 9013726

Sensor Station including 1 Outside Sensor Box, 4 sun sensors, 1 wind sensor and 1 exterior temperature sensor, attached to an aluminium mast.

Dimensions	3200 mm
Power supply	N/A
Mounting	Wall (brackets included)



■ 24 V Lightning Protection

Ref. 9025707

Device to protect the power supply of the Outside Sensor Box against lightning via the power cable.

Dimensions	58 x 90 x 27 mm
Power supply	N/A
Mounting	DIN-rail



■ Sensor Station Extended

Ref. 9013727

Sensor Station including 1 Outside Sensor Box, 8 sun sensors, 1 wind sensor, 1 wind direction sensor, 1 rain sensor and 1 exterior temperature sensor, attached to an aluminium mast.

Dimensions	3200 mm
Power supply	N/A
Mounting	Wall (brackets included)



■ Socket Lightning Protection

Ref. 9014897

Socket for the DIN-rail mounting and connection of the Bus Lightning Protection and the Integrated Lightning Protection 1A for M8 and M13 Weather Station.

Dimensions	50 x 90 x 12mm
Power supply	N/A
Mounting	DIN-rail



■ Lightning Protection 1A

Ref. 1870448

Device to protect the animeo system inside the building against lightning via the RS485 sensor bus of the Weather Stations M8 & M13..

Dimensions	51 x 45 x 12 mm
Power supply	N/A
Mounting	In Socket for Lightning Protection





MOTOR CONTROLLERS & ACCESSORIES

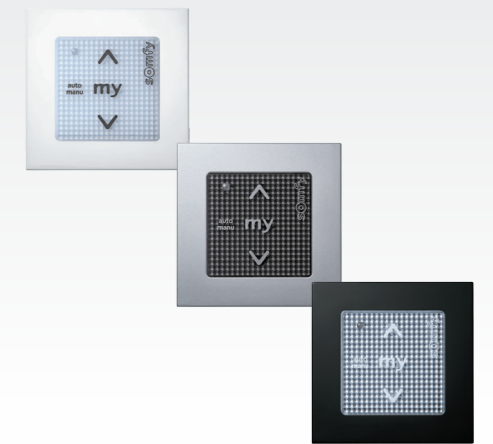
- 33 Smooove Uno IB+
- 33 IB+ 1 AC Motor Controller IWM
- 33 IB+ 1 AC Motor Controller
- 33 IB+ 1 Output Converter
- 34 IB+ 2 AC Motor Controller
- 34 IB+ 4 AC Motor Controller WM
- 34 IB+ 4 AC Motor Controller DRM
- 34 IP54 Housing for 4 AC Motor Controller DRM
- 35 IB+ 6 AC Motor Controller DRM
- 35 IB+ 4 DC Motor Controller WM
- 35 IB+ 4 DC/DC-E Motor Controller WM
- 35 RTS Sister Card 433Mhz
- 36 Switch Zone Splitter
- 36 DIN-rail Adapter
- 36 IB/IB+ Repeater WM

■ Smooove Uno IB+

Ref.1811203 (Pure Shine)/1811204 (Silver Shine)/
1811205 (Black Shine)

Touch-control which makes it possible to individually control **one 230 V AC motor**.

Dimensions	71 x 71 x 44 mm
Power supply	220 - 240 V AC
Mounting	Flush-mounted housing



■ IB + 1 AC Motor Controller IWM

Ref. 1860328

Flush-mounted motor controller to individually control **one 230 V AC motor** with a local control or a group of motors via automation.

Dimensions	50 x 50 x 25 mm
Power supply	230 V AC
Mounting	Wall-mounted

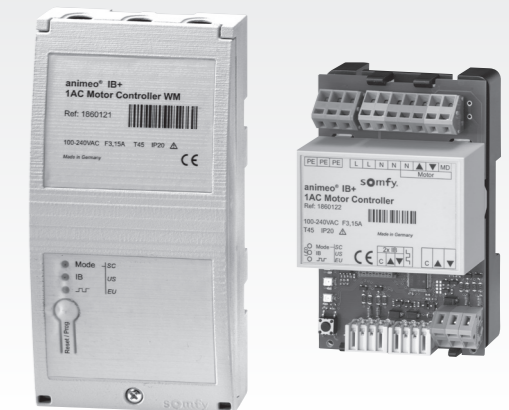


■ IB+ 1 AC Motor Controller

Ref. 1860121 (WM)/1860122 (PCB)

Motor controller to individually control **one 230 V AC motor** with a local control or a group of motors via automation.

Dimensions	90 x 180 x 45 mm/ 65 x 105 x 20 mm
Power supply	100-230 V AC
Mounting	Wall-mounted

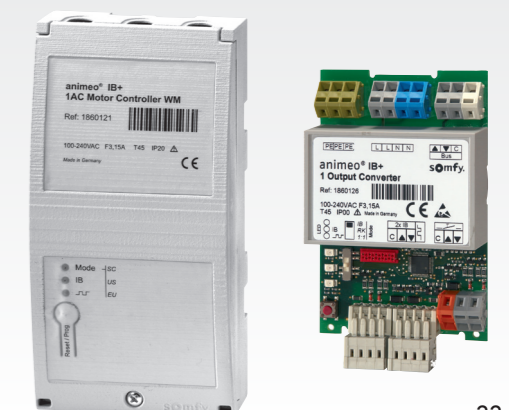


■ IB+ Output Converter

Ref. 1860125 (WM) & 1860126 (PCB)

Provides one potential free output for individual control of a potential free input motor or a control, via local push button.

Dimensions	90 x 180 x 45 mm/65 x 105 x 20 mm
Power supply	100-230 V AC
Mounting	DIN-rail



■ IB+ 2 AC Motor Controller

Ref. 1860209 (wall)/1860210 (DIN-rail)

Motor controller to individually control **two 230 V AC motors** with a local control or the control of a group of motors via automation.

Dimensions	90 x 180 x 45 mm
Power supply	100-230 V AC
Mounting	Wall-mounted or DIN-rail



■ IB+ 6 AC Motor Controller DRM

Ref.1870399

Motor Controller to individually control up to **six 230 V AC motors** via local push buttons or in groups with the 2-wires IB+ controlling technology.

Dimensions	108 x 90 x 63 mm
Power supply	220-230 V AC
Mounting	DIN-rail



■ IB+ 4 AC Motor Controller WM

Ref. 1860049 (230 V AC)/1860080 (120 V AC)

Motor controller to individually control **four 230 V AC motors or one 120 V AC motor** with a local control or the control of a group of motors via automation.

Dimensions	255 x 180 x 61 mm
Power supply	220-230 V AC/120 V AC
Mounting	Wall-mounted



■ IB+ 4 DC Motor Controller WM

Ref.1870451

Motor controller to individually control **four 24 V DC motors** with a local control or the control of a group of motors via automation. Requires an external 24 V DC power supply.

Dimensions	255 x 180 x 61 mm
Power supply	24 V DC
Mounting	Wall-mounted



■ IB+ 4 AC Motor Controller DRM

Ref.1860081

Motor controller to individually control **four 230 V AC motors** with a local control or the control of a group of motors via automation.

Dimensions	210 x 90 x 61 mm
Power supply	220-230 V AC
Mounting	DIN-rail



■ IB+ 4 DC/DC-E Motor Controller WM

Ref. 1860087 (wall)/1860200 (DIN-rail)

Motor controller to individually control **four 24 V DC or DC-E motors** with a local control or the control of a group of motors via automation.

Dimensions	255 x 180 x 61 mm
Power supply	220-230 V AC
Mounting	Wall-mounted or DIN-rail

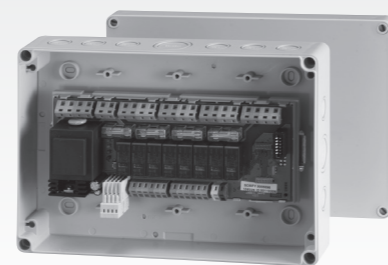


■ IP54 Housing for 4 AC Motor Controller DRM

Ref. 9012740

For the integration of an IB+ 4 AC Motor Controller DRM into IP54 housing.

Dimensions	254 x 180 x 61 mm
Power supply	N/A
Mounting	Wall-mounted



■ RTS Sister Card 433MHz

Ref. 1860105

Receiver to control 4 AC, 4 DC or 4 DC/DC-E Motor Controllers by RTS radio with RTS radio local controls. Clips directly into the Motor Controller.

Dimensions	52 x 92 x 27 mm
Power supply	5 V DC
Mounting	Clips into the Motor Controller



■ Switch Zone Splitter

Ref.1810392

To create sub-groups in the same IB+ zone.

Dimensions	80 x 80 x 52 mm
Power supply	N/A
Mounting	Wall-mounted

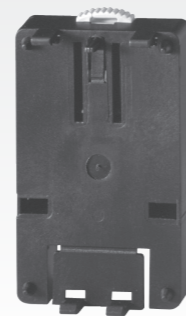


■ DIN-rail Adapter

Ref. 9008049

Makes it possible to install DIN-Rail Motor Controllers on 35 mm DIN-rail.

Dimensions	70 x 105 x 23 mm
Power supply	N/A
Mounting	35 mm DIN-rail

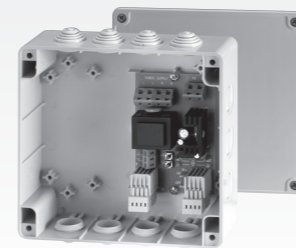


■ IB/IB+ Repeater WM

Ref.9011809

Dedicated to the IB+ bus, the repeater is necessary every 1000 m and/or every 100 Motor Controllers.

Dimensions	165 x 160 x 60 mm
Power supply	220-230 V AC
Mounting	Wall-mounted





SETTING TOOLS

- 39 IB+ Wiring Test Tool
- 39 RTS Programming Tool
- 39 USB IB+ Interface

SETTING TOOLS

■ IB+ Wiring Test Tool

Ref. 1810793

Allows to test the IB+ bus line before programming the TouchBuco: rotation direction of the motors and testing the 4th wire.



■ RTS Programming Tool

Ref. 1810879

To assign the RTS remote controls to RTS cards attached to the Motor Controllers.



■ USB IB+ Interface

Ref. 1860146

For troubleshooting Motor Controllers with a direct connection to a computer.





USER CONTROLS

- 41 Smooove Origin IB
- 41 Smooove 1 RTS
- 41 Smooove Origin RTS IN
- 41 Telis 1 RTS
- 42 Telis 1 Modulis RTS
- 42 Telis 4 RTS
- 42 Telis 4 Modulis RTS
- 42 Surface-mounted Key Switch
- 43 Built-in Key Switch

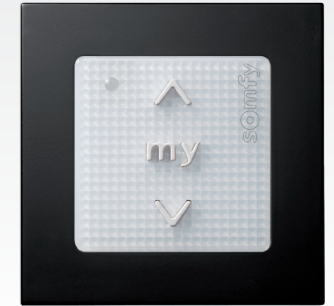
USER CONTROLS

■ Smooove Origin IB

Ref. 1811272

Wall control by central IB bus line to have individual, grouped or overall control of several motors.

Dimensions	71 x 71 x 44 mm
Power supply	24 V DC
Mounting	Wall-mounted

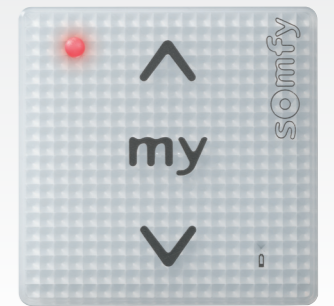


■ Smooove 1 RTS

Ref. 1810873 (Pure)/1810902 (Black)/1810904 (Silver)

1 channel wall-mounted radio control to have individual, grouped or general control of several motors via the RTS radio receiver card.

Dimensions	50 x 50 x 10 mm
Power supply	Battery powered
Mounting	Wall-mounted

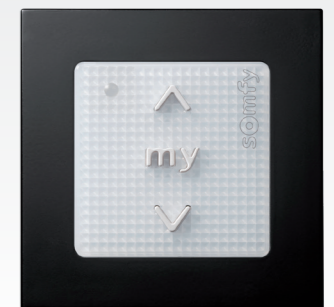


■ Smooove Origin RTS IN

Ref. 1811218

1 channel wall-mounted radio control to have individual, grouped or general control of several motors via the RTS radio receiver card.

Dimensions	71 x 71 x 44 mm
Power supply	Battery powered
Mounting	Wall-mounted



■ Telis 1 RTS

Ref. 1810630 (Pure)/1810637 (Silver)/1810649 (Lounge)

1 channel RTS radio remote control to control one or several motors via a group control.

Dimensions	145 x 49 x 22 mm
Mounting	N/A



■ Telis 1 Modulis RTS

Ref. 1810974 (Pure)/1810975 (Silver)/1810976 (Lounge)

1 channel RTS radio remote control to control one or several Venetian blinds via a group control. The central scroll wheel ensures precise and comfortable control of the slats.

Dimensions	144.7 x 48.5 x 25.5 mm
Mounting	N/A



■ Built-in Key Switch

Ref. 1850048 (pulse)/Ref. 1850050 (lock)

Double pulse switch to secure or lock the blinds in the desired position. Includes 3 keys.

Dimensions	105 x 75 x 25 mm
Mounting	Flush-mounted



■ Telis 4 RTS

Ref. 1810631 (Pure)/1810638 (Silver)/1810651 (Lounge)

5 channel RTS radio remote control to control one or several motors via a group control.

Dimensions	145 x 49 x 22 mm
Mounting	N/A



■ Telis 4 Modulis RTS

Ref. 1810765 (Pure)/1810663 (Silver)/1810664 (Lounge)

5 channel RTS radio remote control to control one or several Venetian blinds via a group control. The central scroll wheel ensures precise and comfortable control of the slats.

Dimensions	144.7 x 48.5 x 25.5 mm
Mounting	N/A

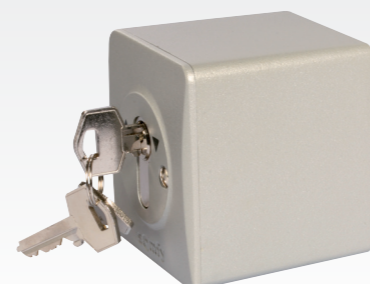


■ Surface-mounted Key Switch

Ref. 1841036 (pulse)/Ref. 1850038 (lock)

Double pulse switch to secure or lock the blinds in the desired position. Includes 3 keys.

Dimensions	60 x 60 x 50 mm
Mounting	Wall-mounted



About Somfy

Somfy's leading smart management solutions for homes and buildings have been improving people's daily lives for over 50 years. Developed with comfort, ease of use, security and sustainability in mind, our innovations automate and connect rolling shutters, curtains and blinds, gates and garage doors, lighting and heating, alarms systems and more. We are committed to creating useful solutions that are accessible to all, designed for today and beyond.

Somfy Activités SA

50 avenue du Nouveau Monde
BP 152 - 74307 Cluses Cedex
France

Tel. +33 (0)4 50 96 70 00

Fax +33 (0)4 50 96 71 89

www.somfy.com/projects

A BRAND OF **SOMFY** GROUP

somfy®